



Setup video

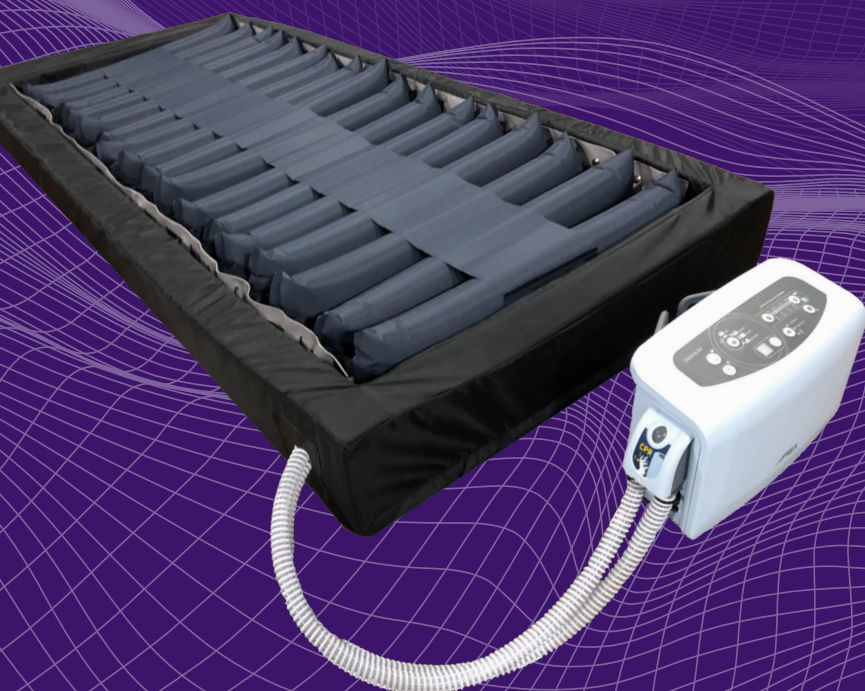
# Serene air with foam edge

True low air loss APT & pulsation system with transfer edge

The Serene Edge is a dual mode system with Alternating Pressure Therapy (APT) or Pulsation. APT modes assist in wound healing and prevention using four operating cycles (5/10/15/20 min.) based on therapy requirements while Pulsation mode increases and decreases the surface's air volume every 15 seconds. Additional features include a 3" wide transfer edge enabling safe and easy transfer, Constant Low Pressure (static) option, max inflate and seat inflation for the Fowler position, and a 2" foam layer built into the base of the surface to prevent clients from bottoming out. With the addition of our add on bolsters with full enclosure R5 covers and 6" wide firm transfer edge can transform the Serene Edge systems 36", 42" and 48" wide (bought separately) into 48", 54", and 60" wide systems to meet your clients' needs.

## Features at a glance

- Designed for vulnerable clients at high to very high risk for pressure injuries
- Provides effective microclimate control through low air loss technology
- High performance blower offers >120 L/min of air loss for effective microclimate control
- 3" wide transfer edges with additional 2" foam layer built into the surface base
- Fluid-resistant, four-way stretch, quilted cover
- Zippered cover allows for one-step removal
- Supports clients weighing up to 650 lb
- Available sizes:
  - 36" / 42" x 79"L x 8"H
- Optional gap filler extends the surface to a length of 84"



Serene Edge controls